

MICROPOWER



*8 Precision Str Kya-Sand Randburg
P.O.Box 4430 Randburg 2125
Tel 011 462 1106 Fax 011 462 1943
www.micropower.co.za*

1. Load Cell Low Profile Type (LFR)



Rated load: 0.5-20t

Material: Alloy Steel

silicone sealed, IP67

Widely used for truck scale, railway scale and hopper scale.

2. Load Cell Low Profile Type (QS-I)



Rated Load: 5t, 7.5t, 8t, 12.5t

Sensitivity: 2.0 mV/V

Material: alloy Steel / stainless steel

Protect Class: IP67

Widely used for low profile weighing equipment.

3. Load Cell Single Point (XS-A)



Capacity: 10-30kg

Sensitivity: 2.0mV/V

Material: alloy steel

Protect Class: IP67

Used for platform scales and bench scale.

4. Bending Beam Load Cell (Sp5-300kg)



Rated load: 5-300kg

Material: Alloy Steel / stainless steel

Laser welded, IP68

Used for belt scale, platform scale and industrial control systems

5. Load Cell Single Point (XS-K)



Capacity: 1000-2000kg

Sensitivity: 2.0mV/V

Material: aluminium / alloy steel

Protect Class: IP67

Used for platform scales and bench scale.

6. QS Load Cells (QS 10-50T)



Rated load: 10-50T

Material: Alloy Steel / Stainless Steel

Widely used for railway and truck scales.

7. Load Cell S Type (TSA)



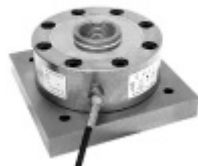
Rated Load: 50kg, 100kg, 200kg, 250kg, 300kg, 500kg, 1000kg

Sensitivity: 2.0mV/V

Material: alloy steel

Protect Class: IP67

8. Load Cell Low Profile Type (LFT)



Rated load: 0.5-20t

Material: Alloy Steel

silicone sealed, IP67

Widely used for truck scale, railway scale and hopper scale

9. Single Point Load Cell (XS-F)



Capacity: 100kg - 1t

Sensitivity: 2.0mV/V

Material: alloy steel

Used for platform scales and bench scale.

10. Load Cell Bending Beam Type (QS)



Rated load: 10-50t

Sensitivity: 2.0mV/V

Material: alloy Steel with chrome plated

Widely used for electronic truck scale, hopper scale and railway scale.

11. Load Cell Shear Beam Type (SB)



Rated Load: 0.5-20T

Sensitivity: 2.0 mV/V

Material: Alloy Steel / stainless steel

Protect Class: IP67 / IP68

Widely used for truck scales and weighing system

12. Crane Scale Load Cell (BTG-C)



Rated load: 10-20t

Material: Alloy Steel

Silicone sealed, IP67

Enjoy high stable, widely used for crane scale.

13. Digital Load Cell (QSD)



Rated load: 10-30t

Material: Alloy Steel

1. With A/D module and CPU inside
2. With RS485 signal output, 2. With RS485 signal output, the transmitting distance can reach 1200m
3. The non-linearity and temperature performance parameter could be automatically compensated by digital
4. Don't need to calibrate again after change load cells

Widely used for electronic truck scale and measurement system.

14. Load Cell S Type (TSG)



Rated Load: 0.5-20T

Sensitivity: 2.0mV/V

Material: Alloy steel

Protect Class: IP68

Apply to crane scales and hopper scales.

15. Single Point Load Cell (XS-C)



Capacity: 50kg - 300kg

Sensitivity: 2.0mV/V

Material: aluminium / alloy steel

Used for platform scales and bench scale.

16. Load Cell Shear Beam Type (SQC-A)



Rated Load: 0.5-10T

Sensitivity: 2.0 / 3.0 mV/V

Material: Alloy Steel / stainless steel

Protect Class: IP67 / IP68

Widely used for platform scales

17. Load Cell Single Point (XS-L)



Capacity: 30-100kg
Sensitivity: 2. 0mV/V
Material: aluminium / alloy steel / stainless steel
Protect Class: IP67
Used for platform scales and bench scale.

18. Load Cell For Crane Scales (TSC)



Rated Load: 0. 5-20T
Sensitivity: 2. 0mV/V
Material: Alloy steel
Protect Class: IP68
Apply to crane scales and hopper scales.

19. Load Cell With Module (SQC-A-M)



Rated Load: 0. 5-10T
Sensitivity: 2. 0 / 3. 0 mV/V
Material: Alloy Steel / stainless steel
Protect Class: IP67 / IP68
Used for platform scales, hopper scales and truck scales.

20. Load Cell With Module (Low Profile) (LFT-A-M)



Rated load: 0. 5-20t
Material: Alloy Steel
Silicone sealed, IP67 **Widely used for truck scale, railway scale and hopper scale**

21. Load Cell For Pallet Scales (SQC-F)



Rated Load: 0. 5t, 1t, 2t, 3t

Sensitivity: 2. 0 mV/V

Material: Alloy Steel / stainless steel

Protect Class: IP67 / IP68

Apply to pallet scales and hopper scales

22. Mounting Accessory



A good load cell accessory

23. Load Cell Column Type (BTY-A)



Rated Load: 10-40T

Sensitivity: 2. 0 mV/V

Material: Alloy Steel / stainless steel

Protect Class: IP68

Widely used for truck scales and hopper scales

24. Load Cell Column Type (BTY-F)



Rated Load: 50kg, 100kg, 200kg, 500kg, 1t, 2t, 3t

Sensitivity: 2. 0 mV/V

Material: Alloy Steel / stainless steel

Protect Class: IP67

Widely used for test machines

25. Load Cell For Crane Scales (TSA)



Rated Load: 0. 5-3T

Sensitivity: 2. 0mV/V

Material: Alloy steel / stainless steel

Protect Class: IP68

Apply to crane scales and hopper scales.

26. Load Cell Column Type (BTY-B)



Rated Load: 10-60T

Sensitivity: 2. 0 / 3. 0 mV/V

Material: Alloy Steel / stainless steel

Protect Class: IP68

Widely used for truck scales and hopper scales

27. Load Cell (LFA)



Rated load: 0. 5t, 1t, 2t, 3t, 5t

Material: Alloy Steel

silicone sealed, IP67

Widely used for truck scale, railway scale and hopper scale.

28. Bending Beam Load Cell (QS-F)



Rated load: 20-50t

Sensitivity: 1.9000 \pm 0.001mV/V

Material: alloy Steel

Protect Class: IP67/ 68

Used for metallurgical industry metering equipment, such as packing scales, steel kits scales, travel scales

29. Load Cell Column Type (BTY-C)



Rated Load: 30t, 50t, 100t

Sensitivity: 2.0

Material: Alloy Steel / stainless steel

Protect Class: IP67

Widely used for test machines, hopper scales and measuring equipment

30. Load Cell For Elevator / Lift Scales (DTC)



Rated Load: 500KG

Sensitivity: 2.0 mV/V

Material: Alloy Steel

Protect Class: IP67

Widely used for elevator / lift scales